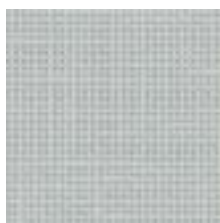


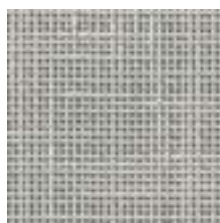
					
Indigo M	*Azure Z	Royal Blue 9B	Blueberry 9H	Reef DT	Clover DG
					
*Apple Green 9E	Purple Iris 93	Maroon MN	*Ruby Red V	Squash 9L	*Sunset Orange 9S
					
Taupe T	Skyline NEW! SS	*Onyx D	Graphite G	*Titanium TN	



Crisp Linen
4E



Nordic Linen
C9



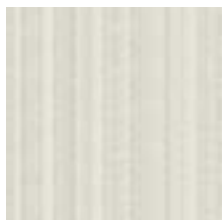
Pressed Linen
5S



Flax Linen
5T



Classic Linen NEW!
4G



High Rise
3E



Handspun Pearl NEW!
HP



Handspun Chestnut
HC NEW!



Handspun Slate NEW!
HS



Handspun Dove NEW!
HD



Candy Apple
J8



Catalina
N3



Fresh Cut
N5



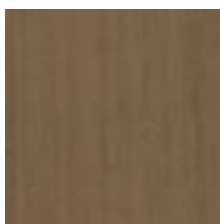
Hanairo
AN



Wasabi
FD



Kingswood Walnut
N8



French Pear
H4



Norwegian Ash NEW!
NA



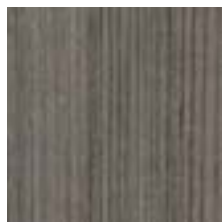
Jubilee Oak NEW!
JU



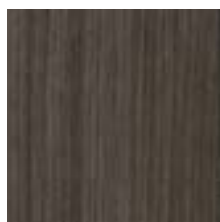
Brazilwood
3A



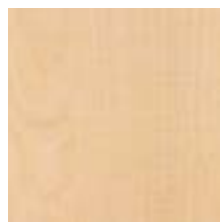
Pinnacle Walnut
F9



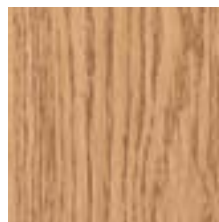
***Portico Teak NEW!**
7P



***Skyline Walnut NEW!**
A3



Fusion Maple
7M



Bannister Oak
08



Nepal Teak
72



Grey Glace
18



Grey Nebula NEW!
69

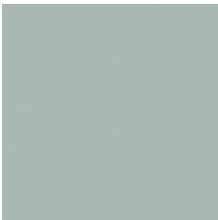


Graphite Nebula NEW!
1P

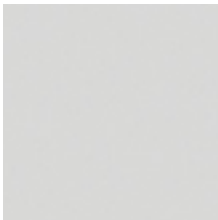


Cleaning guide

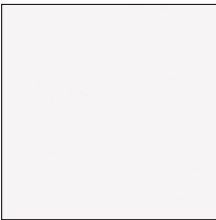
Markerboard Laminates ***Premium Pricing**



*** Fossil**
WD



*** Folkstone**
WF



*** Markerboard White**
W5

Edge Bands



Apple Green
J



Indigo
C



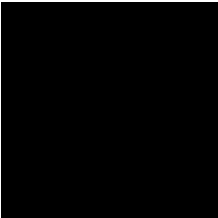
Blueberry
6



Primary Red
H



Orange
5



Black
0



Graphite **NEW!**
2



Titanium
4



White
W

Solid Plastic



Sugar Maple
D



Grey Spectrum
J



Walnut
W

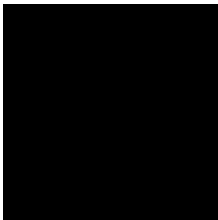
Metal Frames ***Premium Pricing**



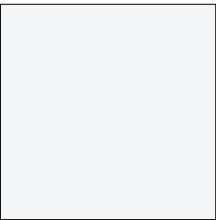
Titanium
4



Chrome
5



Black
7



*White
W

DSLP + DTLP Leg Kits ***Premium Pricing**



Titanium/Chrome
.3.4



Black/Chrome
.3.7



*White/Chrome
.3.W



*Titanium/Titanium
.3.4.4

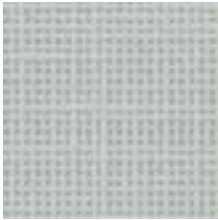


*Black/Black
.3.7.7

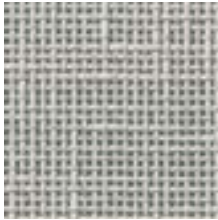
Standard Laminates (Mobile Shelves, Tall Storage, Wardrobes, Bookshelves, Carrels)



Crisp Linen
4E



Nordic Linen
C9



Pressed Linen
5S



Flax Linen
5T



Linen
BA



High Rise
3E



Pinnacle Walnut
F9



Brazilwood
3A



Fusion Maple
7M

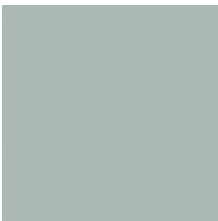


Kingswood Walnut
N8

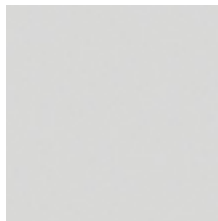


French Pear
H4

Markerboard Laminates (Maker Space Door Kit) ***Premium Pricing**



*** Fossil**
WD



*** Folkstone**
WF

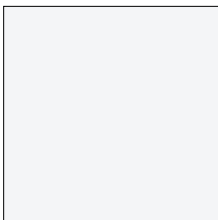


*** Markerboard White**
W5

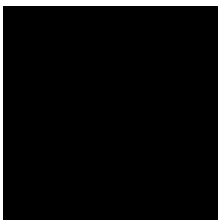
Back Panels (Mobile Shelves, Mobile Library Shelves) ***Premium Pricing**



Titanium
4



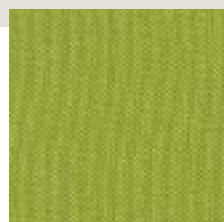
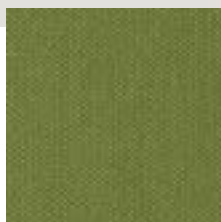
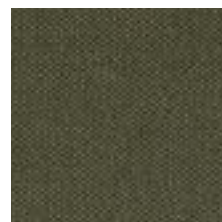
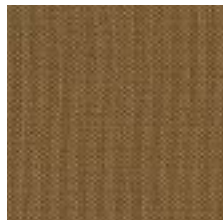
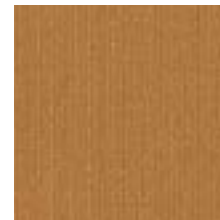
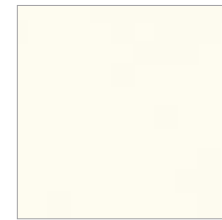
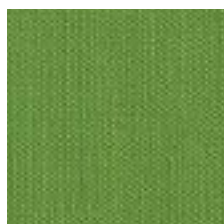
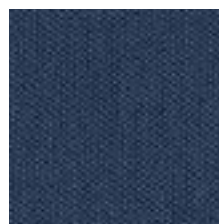
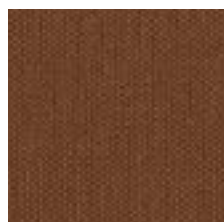
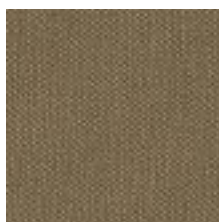
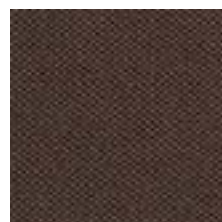
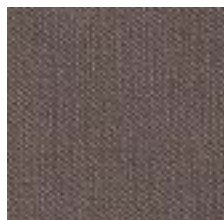
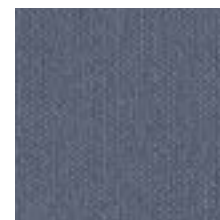
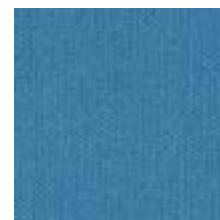
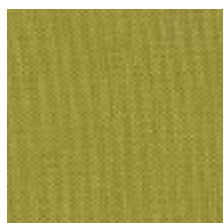
***White**
W



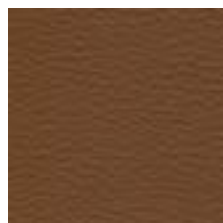
***Black**
7



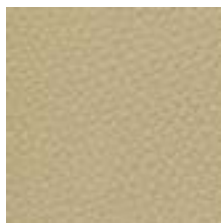
Cleaning guide

**Acid**
S01**Basil**
S02**Bazaar**
S03**Blackberry**
S04**Borscht**
S05**Bottle**
S06**Bronze**
S07**Carbon**
S08**Celery**
S09**Champagne**
S10**Chestnut**
S11**Cream**
S12**Crème De Menthe**
S13**Ice**
S14**Imperial**
S15**Jet**
S16**Lagoon**
S17**Limoncello**
S18**Luggage**
S19**Mandarin**
S20**Marine**
S21**Marsh**
S22**Meteor**
S23**Mocha**
S24**Neutra**
S25**Peat**
S26**Plata**
S27**Poppy**
S28**Raspberry**
S29**Sage**
S30**Sapphire**
S31**Sterling**
S32**Storm**
S33**Taupe**
S34**Turquoise**
S35**Umber**
S36**Zest**
S37

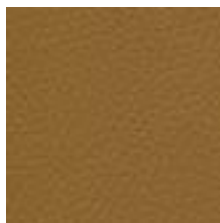
Due to pattern scale and color variations in computer monitors and printers, we strongly suggest you view actual samples before making surface material selections.



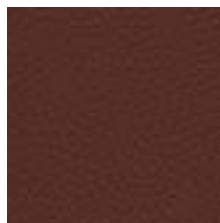
* Amaretto
H01



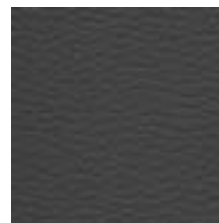
* Bisque
H02



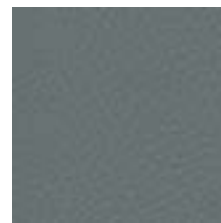
* Camel
H03



* Canyon
H04



* Charcoal
H05



* Cobble
H06



* Emerald
H07



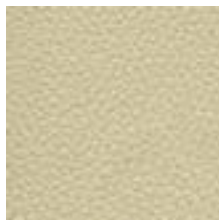
* Garnet
H08



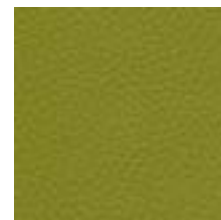
* Granite
H09



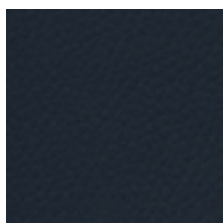
* Huron
H10



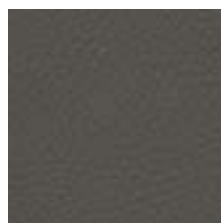
* Ivory
H11



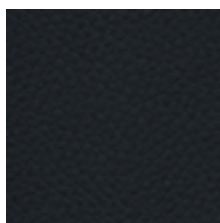
* Lemongrass
H12



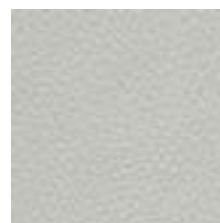
* Marlin
H13



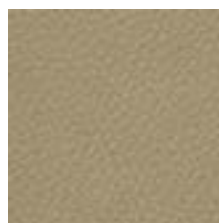
* Meteor
H14



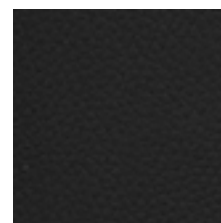
* Midnight
H15



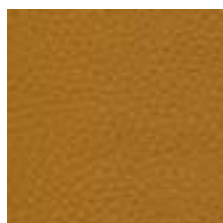
* Misty
H16



* Oat
H17



* Obsidian
H18



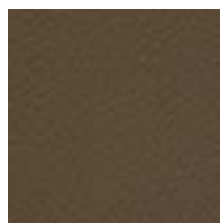
* Saffron
H19



* Stormcloud
H20



* Sunstone
H21



* Terrain
H22



View specifications +
cleaning guide

Due to pattern scale and color variations in computer monitors and printers, we strongly suggest you view actual samples before making surface material selections.



* Aegean
K01



* Alaska
K02



* Aqua
K03



* Clay
K04



* Coral
K05



* Desert
K06



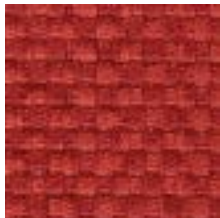
* Driftwood
K07



* Goldenrod
K08



* Indigo
K09



* Rose
K10



* Sage
K11



* Sapphire
K12



* Sky
K13



* Thunder
K14



* Truffle
K15



* Vanilla
K16



* Viridian
K17



* Wisteria
K18



View specifications +
cleaning guide

Due to pattern scale and color variations in computer monitors and printers, we strongly suggest you view actual samples before making surface material selections.



* **Bazaar**
U01



* **Bronze**
U02



* **Champagne**
U03



* **Chocolate**
U04



* **Citron**
U05



* **Foam**
U06



* **Haze**
U07



* **Iceberg**
U08



* **Marsh**
U09



* **Neptune**
U10



* **Saffron**
U11



* **Smokehouse**
U12



* **Taupe**
U13



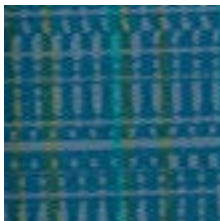
* **Teal**
U14



View specifications +
cleaning guide



* Charcoal
T01



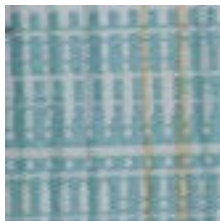
* Delta
T02



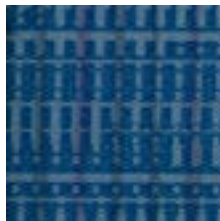
* Espresso
T03



* Flaxen
T04



* Fresh
T05



* Indigo
T06



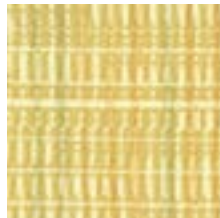
* Mineral
T07



* Peacock
T08



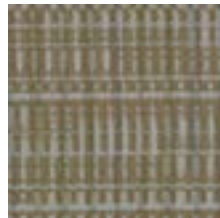
* Pewter
T09



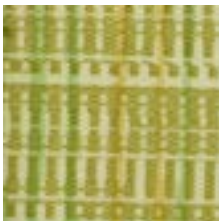
* Pollen
T10



* Salsa
T11



* Sorrel
T12

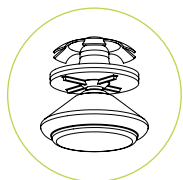


* Zest
T13

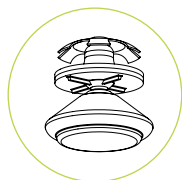


View specifications +
cleaning guide

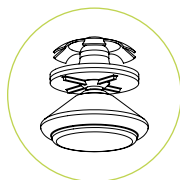
Due to pattern scale and color variations in computer monitors and printers, we strongly suggest you view actual samples before making surface material selections.



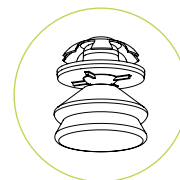
Nylon (3)
All purpose nylon swivel glide
Rounded leading edge
VCT, Vinyl, Tile or Carpet flooring



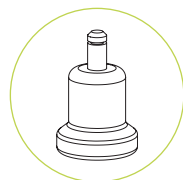
Steel (1)
All purpose steel swivel glide
Best glide for carpeted surfaces



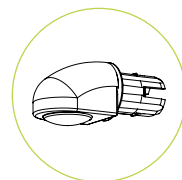
Non Skid (2)
All purpose non-skid swivel glide
Not for use on carpeted surfaces



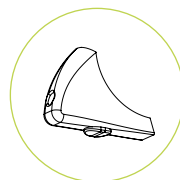
Felt (F)
All purpose felt swivel glide
VCT, Vinyl, Tile or Wood.
Glide cap can be changed out in seconds



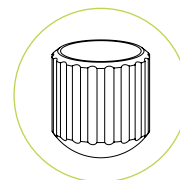
Bell Glide (B)
For use on 5-star task and
Stool bases. Nylon base



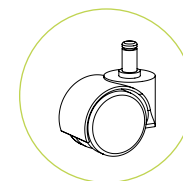
Cantilever Toe Glide
Select from nylon (3), Steel (1)
Felt (F) or Non-skid (2) button
Glide inserts.



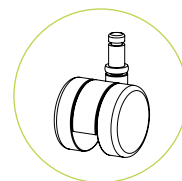
Cantilever Heel Glide
Select from nylon (3), Steel (1)
Felt (F) or Non-skid (2) button
Glide inserts.



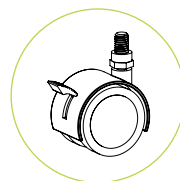
Boot Glide (**)
Non-Skid Rubber
Available in Multiple Colors
VCT, Vinyl or Tile



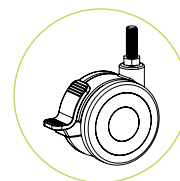
Hard Wheel (H)
50mm Dual Hard Wheel
7/16 x 7/8 brass grip ring



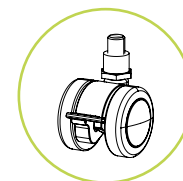
Hard Wheel
50mm Dual Hard Wheel
7/16 x 7/8 brass grip ring
Discover and Uniflex
4-Leg Chairs



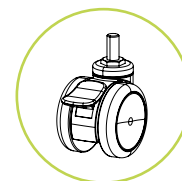
TA-CPS4
50mm Dual Soft Wheel
Locking Caster
3/8" - 16 x 1"
Threaded Stem



TA-CPTD3
75mm Locking Caster
3/8" - 16 x 1"
Threaded Stem



TA-CPMS50T4
50mm Locking Caster
3/8" - 16 x 1"
Threaded Stem



TA-CPMS75T4
75mm Locking Caster
3/8" - 16 x 1"
Threaded Stem

REFER TO SPECIFIC PRODUCT PAGES FOR GLIDE AVAILABILITY BY MODEL.

NOTE ON GLIDES & FLOOR MAINTENANCE

Our research shows that no single solution can provide optimum performance across all floor types and conditions. Overall performance is based upon the type of flooring, preventative floor maintenance program and glide design & material selection. Highly textured flooring and/or floors with enhanced wear resistant layers can negatively impact glide wear and floor surface. To maximize the performance of your furniture glides, floors must be properly prepared, and maintained. Soil, grit and the wrong polish can make a floor susceptible to damage regardless of the glides used on your furniture. Your flooring installer and/or manufacturer can provide specific guidelines on floor maintenance and precautions.